

Toronto
1 416 368 1801

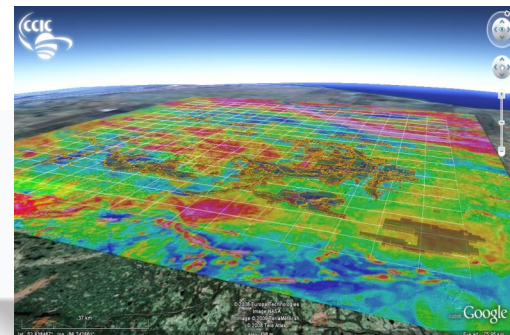
Vancouver
1 604 637 2050

Sudbury
1 705 671 1801

Johannesburg
27 (0) 11 880 0278

GEOPHYSICAL SERVICES

Caracle Creek's combined geophysical & geological team brings you the most integrated geophysical services available today. We specialize in helping geologists use geophysics effectively and our geologists and geophysicists speak the same language: **Yours**

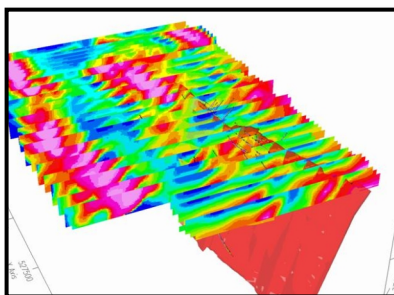


Why Geophysics?

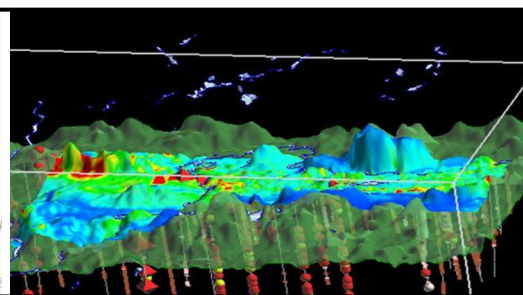
Knowledge integration between geoscientists is key to better targeting. Better targeting is the backbone of modern exploration. It's efficient, practical and necessary. The bottom line is that you can't afford to ignore the geophysical elements of your project. Our team members have significant experience with airborne survey methods, operations and interpretation. We regularly work with EM methods, IP and AMT/ MT methodology and have specialized geophysical experience in diamond exploration. We offer a broad range of standard and niche geophysical services from project conception and regional terrain analysis to surveys and surveys planning.

You can rely on us for solid interpretation and advice in these key areas:

- Physical Rock Property Analysis
- Survey Planning and Management
- Interpretation Services
- EarthProbe Borehole & Surface IP Surveys



Inversion Processing



3D Compilations

About Caracle Creek

Caracle Creek's integrated approach to geophysical and geological services means you get the info you need to make the right decisions, at a fraction of the cost.

No more hiring separate consultants for different stages of your project. Our team is innovative and agile, just like you, and our geologists, geophysicists and engineers work together to make your project successful.

Whether you engage us to manage your entire project or to simply execute a few surveys, working with Caracle Creek is the right decision.

We have offices in Canada, South Africa and the Dominican Republic ready to serve you.

Visit www.caraclecreek.com to learn more!