

STRUCTURAL GEOLOGICAL MAPPING & INTERPRETATION

Mapping

At Caracle Creek, structural geological mapping is our specialty.

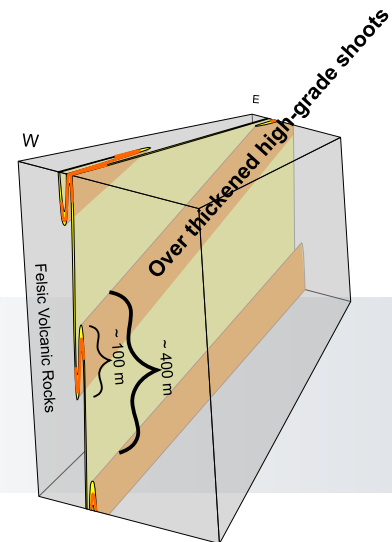
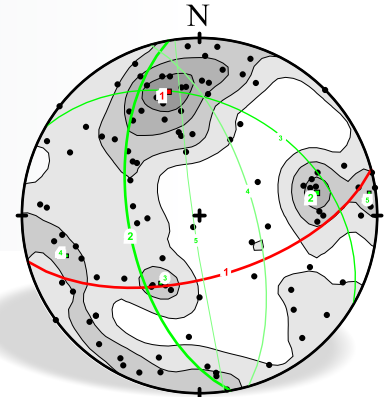
With over ten years of experience (and decades of combined experience) our team regularly works in the field collecting structural and geological data to help you maximize your return on drilling.

In addition to collecting geological and structural data and producing structural maps, we can assist you in the following areas:

- Validation and interpretation of historical geological data
- Analyzing structural features in drill core
- Development of 3D structural models
- Developing exploration targets in greenfield to brownfield areas
- Interpretation

Once we've developed your structural maps, Caracle Creek's expert team will interpret the results to answer your most important questions:

1. Which structures host mineralization and which don't?
2. Where does the mineralization extend?
3. What controls the location of high-grade zones?
4. Identify key joints and fractures



About Caracle Creek

Caracle Creek's integrated approach to geophysical and geological services means you get the info you need to make the right decisions, at a fraction of the cost.

No more hiring separate consultants for different stages of your project. Our team is innovative and agile, just like you, and our geologists, geophysicists and engineers work together to make your project successful.

Whether you engage us to manage your entire project or to simply execute a few surveys, working with Caracle Creek is the right decision.

We have offices in Canada, South Africa and the Dominican Republic ready to serve you.

Visit www.caraclecreek.com to learn more!